

# Drawing AlloSure Specimens

## 1 COMPLETE LABELS

**A** On the Tube & Accession Labels card, complete the two tube labels completely. First and last name, DOB, phlebotomist initials and draw date **MUST** be completed.

## 2 DRAW BLOOD

- A** Check the expiration dates on both Streck tubes.
- B** ONE Streck tube needs to be completely full. Fill the 2nd tube as much as possible. **NOTE:** for smaller pediatric patients only 5-6mL, or half of one tube, is needed. Follow the draw order shown below.\*
- C** Mix by gentle inversion.
- D** Place a completed tube label lengthwise on each tube; do not cover expiration date.

## 3 PREPARE ORDER FORM

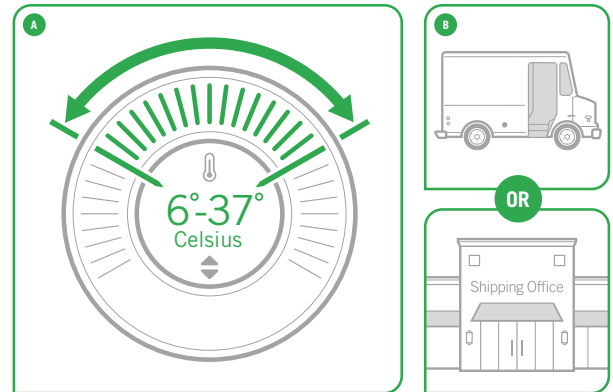
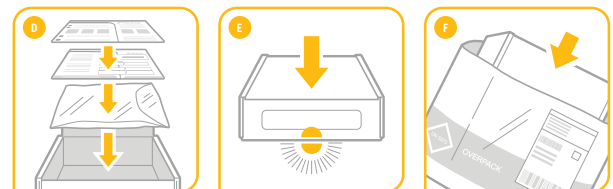
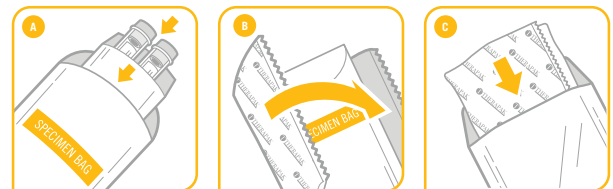
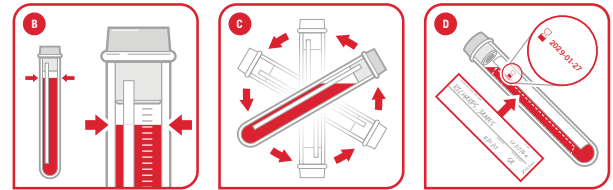
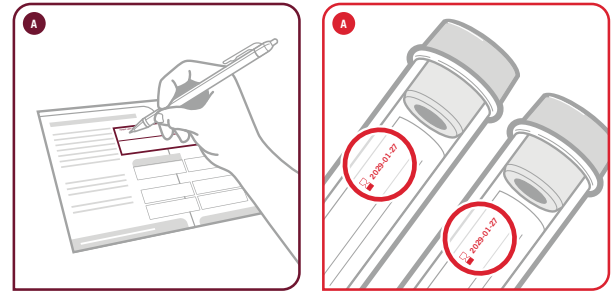
- A** From the Tube & Accession Labels card, place the first white barcode label on the upper right corner of the order form.
- B** Whatever type of order is used, please include:
  - patient's first and last name
  - date of birth
  - prescriber name
  - transplant center
  - draw date
  - phlebotomist initials

## 4 PACKING THE SPECIMENS

- A** Place the tubes in the absorbent pouch and place pouch in the specimen bag and seal.
- B** Wrap the specimen bag in the gel pack.
- C** Place gel pack in foil pouch and seal.
- D** Place pouch in kit box. Place the order form and Tube & Accession Labels card on top of pouch. Place List of Contents card on top.
- E** Close the kit box.
- F** Place the box inside the labeled shipping courier bag. Seal and send.
- G** Specimens should be shipped same day. Specimen must arrive at CareDx within seven days of draw.

## 5 STORAGE & SHIPMENT

- A** Store specimens between 6° and 37° C until shipping.
- B** Contact shipping courier for same day pickup, or drop the specimens at the nearest shipping courier facility.



### \*DRAW ORDER

This is the draw order to be followed for AlloSure testing.

